

1 second-hand horizontal cold chamber  
pressure die casting machine (casting cell)

-----

Make: BÜHLER  
Model: SC D/42  
New in: 1996

The machine is equipped with:

-----

- 2-fold tiebar withdrawal
- 3-Phase-injection-system (Intensifier)
- Motorized die height adjustment
- Hydraulic ejector
- Connections to operate core pull unit
- Locking stroke safety device - electro-hydr.
- Central lubrication
- Pneumatic safety door
- Spray unit make: Wollin PSM 324, new 1997
- Extractor make: Bühler Pickmat 1
- Hydraulic medium: water-glycol
- Dosage furnace make: Westofen Westomat 40S, new 1982
- Heating and coolant unit make Thermobiel HK1502, 2-circles
- Automatic plunger lubrication
- Control SPS Bühler

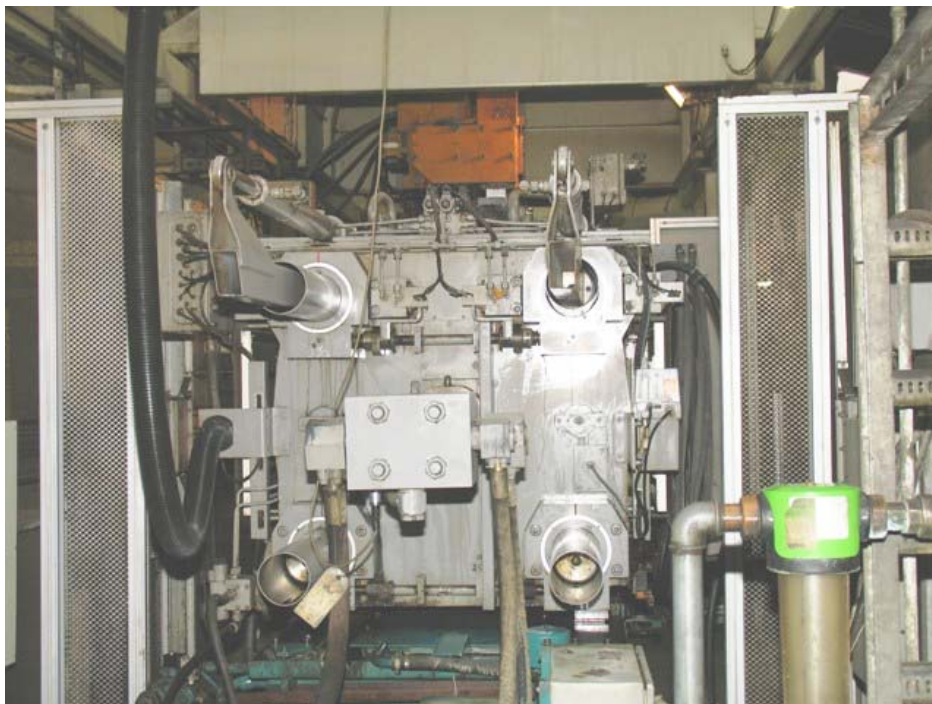
#### TECHNICAL SPECIFICATIONS:

=====

Locking force	420 tons
Injection force	19,5 tons
Ejector force	15 tons
Ejector stroke	145 mm
Min./max. die height	300 / 750 mm
Platen dimensions - h x v	1000 x 1000 mm
Distance between tie-bars - h x v	640 x 640 mm
Tie-bar-diameter	125 mm
Die opening stroke	640 mm
Injection plunger stroke	50 mm
Injection plunger-diameter	60 - 100 mm
Casting volume	942 - 1617 cm <sup>3</sup>
Max. shot weight - Al	2,36 - 6,54 kg
Specific injection pressure on metal	1730 - 623 bar
Max. projected area with above pressure	240 - 680 cm <sup>2</sup>
Driving capacity	30 kW
Floor space (length x width) approx.	6600 x 2800 mm
Weight approx.	18 t

- All information given without engagement -  
Errors Excepted !





# Global Business GmbH

*Your partner for used machine tools*



Global Business GmbH  
Drosselweg 26 – 28  
71397 Leutenbach

Handelsregister: Stuttgart  
Geschäftsführer: Dr. Hans F. Busch

[www.globus-trading.com](http://www.globus-trading.com)  
[mail@globus-trading.com](mailto:mail@globus-trading.com)